

A COTTAGE

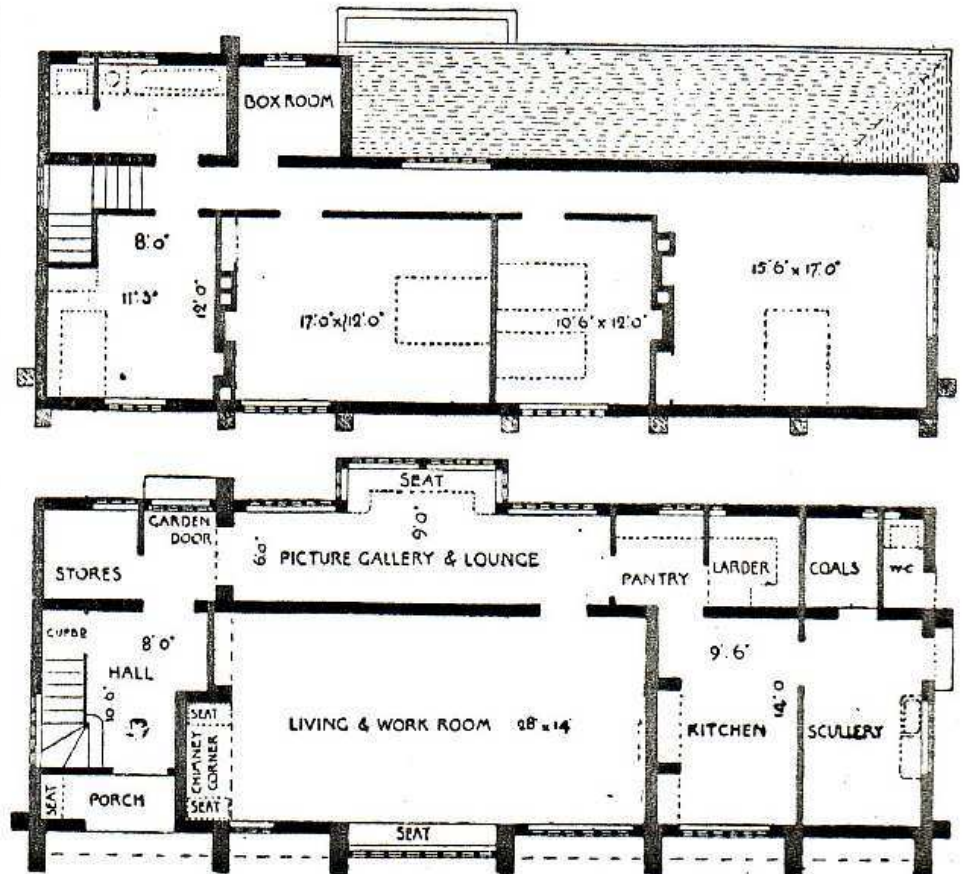
FRONT ELEVATION

A N ARTIST'S COTTAGE. DESIGNED BY C. F. A. VOYSEY.

A THE cottage, designed by Mr. C. F. A. Voysey, which by his kindness we are permitted to illustrate here, is so typical an example of a style he has carried out in many similar instances, that a few details of its purpose and construction may be not uninteresting, especially as a picture-gallery—a rather unusual feature in a house of its size—marks it as an abode for art-loving people, did not the reticent simplicity of its whole treatment, combined as it is with finely proportioned masses, reveal the fact beforehand.

This cottage was designed some years ago to be built with the best materials and in a sound and durable manner, yet as cheaply as possible, the total cost being estimated at from £700 to £800. The walls are brick, rough-cast on the outer face in cement, and afterwards lime whitened. The timber is solid and tarred, bedded in and filled between with breeze concrete, and the roof covered with boards, felt, and green slates. The external woodwork is painted bright green, thus producing a clean simple combination of colour designed to

harmonise with the greens of surrounding trees and hills. The ground-floor is arranged of solid cement and breeze concrete, well tarred and boarded on the surface. All mouldings are omitted, except where of practical advantage. Hot and cold water is laid on to the bath-room from the kitchen range. The ceilings of the bedrooms are slightly in the roof, and the rooms are ventilated by means of 9 x 9 in. exhaust air-flues at the side of the smoke-flues.



PLAN OF THE ABOVE