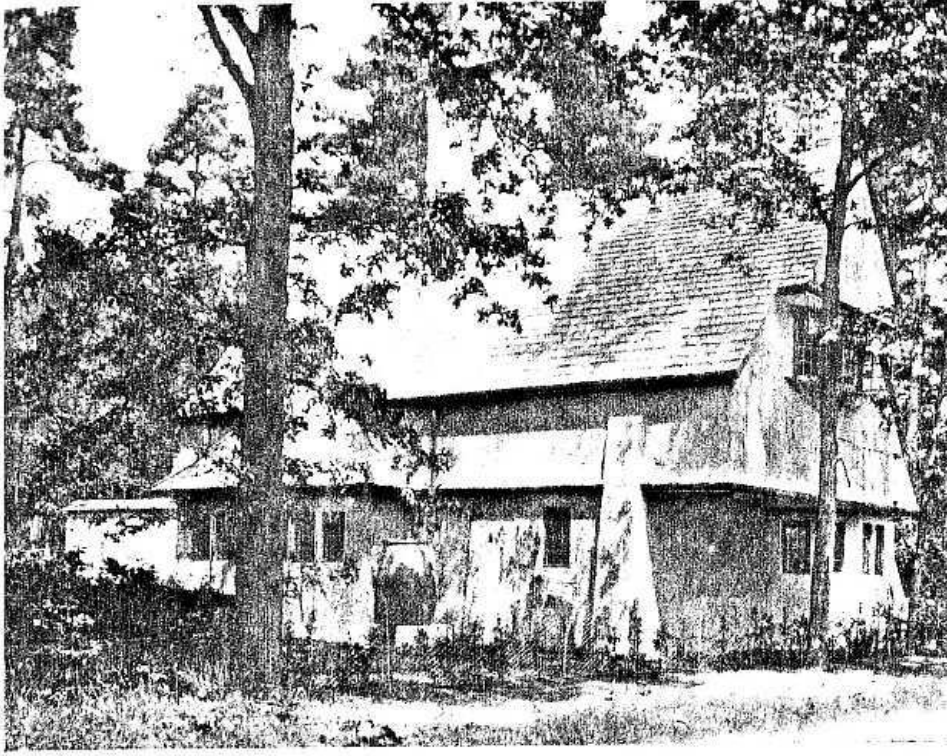


SOME RECENT
DESIGNS FOR
DOMESTIC
ARCHITECTURE.



LODGE AT "NORNEY," SHACKLEFORD

C. F. A. VOYSEY, ARCHITECT

suggestive of Byzantine severity, is yet very real, very modern and very devotional in thought. It shows the kneeling form of a young woman, her hands clasped at her throat, her head inclined, her countenance fervid with intensity. For frank, honest portraiture, there can be no more excellent specimen than the bust of the sculptor Dillens, by Jules Lagae, and for a sweet alluring lyric no more delightful subject could be given than the *Angel fo Home*, by the same artist.

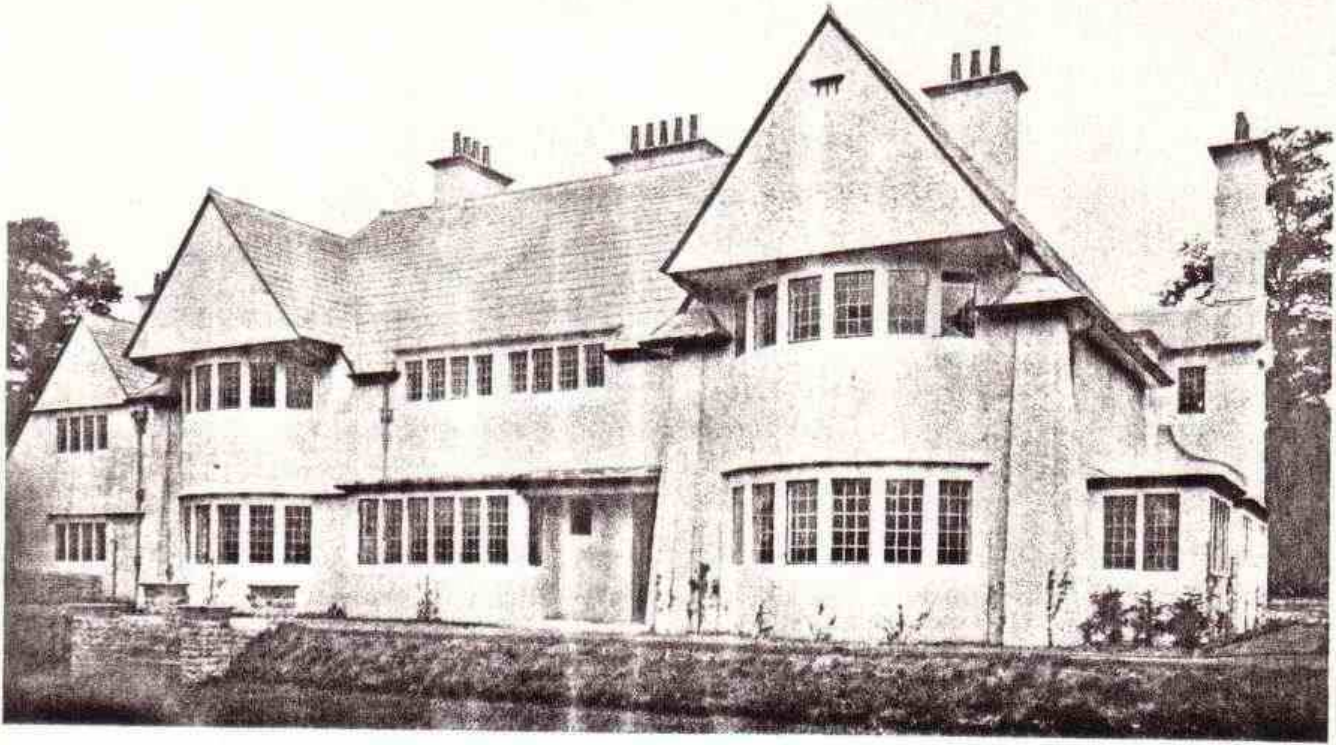
This concerted effort on the part of individual artists to follow to a conclusion the art questions of the day is bound to place Belgium in a conspicuous position among her sister nations in the artistic field. And, if the line of progress should lie in the direction of the sincerity that characterised the early Flemish school, the supporters of the present movement, who have consistently proved themselves both strenuous and devoted in the cause of art, might well feel that they had met with gratifying results.

laid out and beautifully wooded. The materials employed for the house are brick and cement rough-cast, with Westmorland green slate for the roof and oak joinery inside. The casements are in iron, and Monks Park stone has been used for the window dressings and Portland stone for the porch, chimney caps, and all exposed places. An illustration is also given of the entrance lodge.



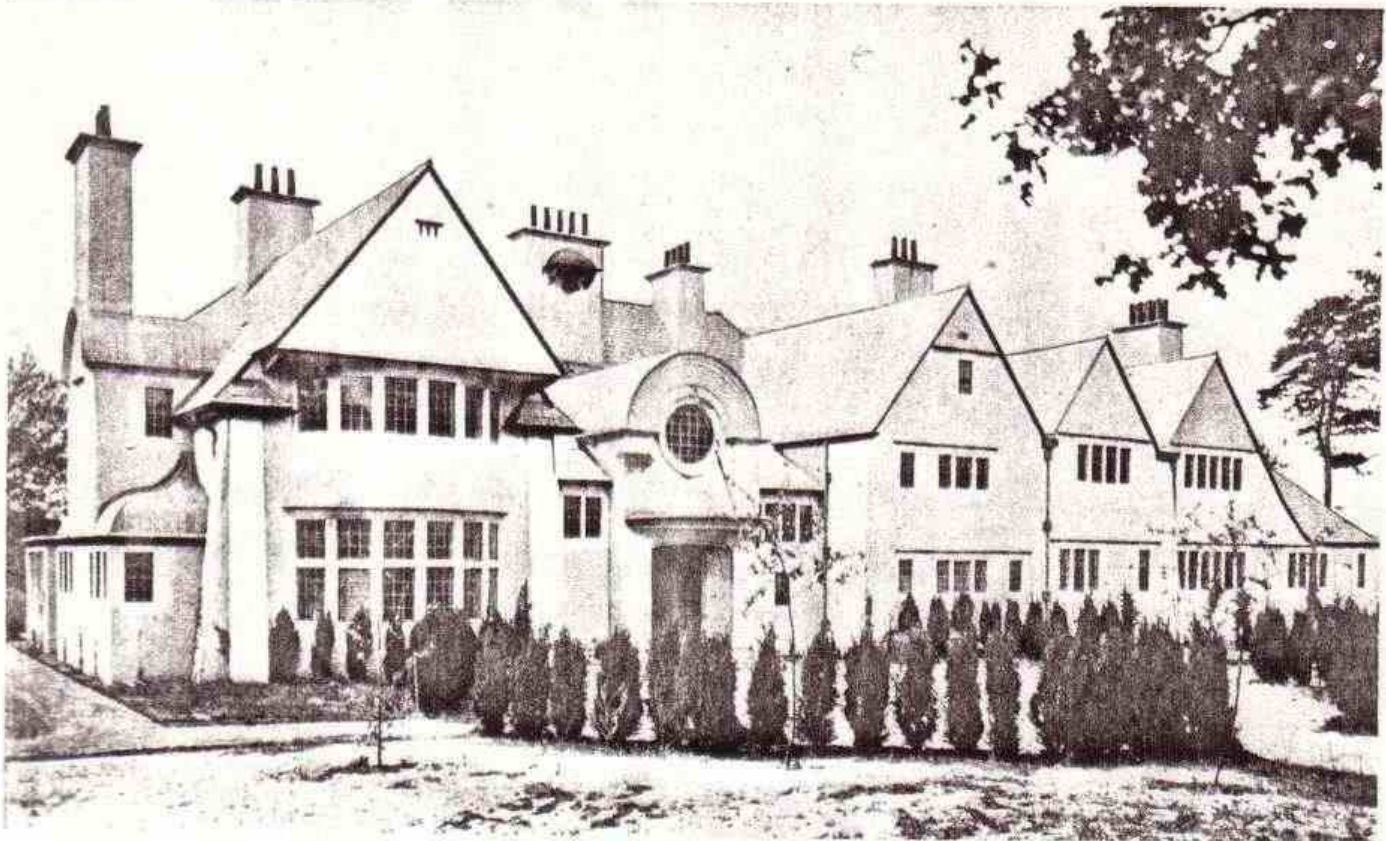
"NORNEY," SHACKLEFORD

C. F. A. VOYSEY, ARCHITECT



"NORNEY," SHACKLEFORD: GARDEN FRONT

C. F. A. VOYSEY, ARCHITECT



"NORNEY," SHACKLEFORD: ENTRANCE FRONT

C. F. A. VOYSEY, ARCHITECT