

# MODERN BRITISH DOMESTIC ARCHITECTURE AND DECORATION

EDITED BY CHARLES HOLME  
///

OFFICES OF 'THE STUDIO,' LONDON,  
PARIS, NEW YORK MCMII



# LIST OF SUPPLEMENTS

	PAGE
1. A SCHEME OF SIMPLE DECORATION FOR A DINING-ROOM. Reproduced in Colours from a Design by A. H. BAXTER	33
2. DESIGN FOR A FIREPLACE IN CEDAR WOOD. Reproduced in Colours from a Design by FRANK BRANGWYN	43
3. GARDEN FRONT OF A HOUSE AT HAMBLEDON. Reproduced in Colours from a Design by R. A. BRIGGS	57
4. A HOUSE AT CROWBOROUGH, SUSSEX. Reproduced from a Pencil Drawing by R. A. BRIGGS	59
5. "THE GARDEN OF ADONIS." A Reproduction in Colours from a Panel of Embroidery designed and executed by MARY NEWILL	81
6. "A SEA IDYLL." Design for a Panel of Stained Glass. Reproduced in Colours from a Drawing by H. GRANVILLE FELL	95
7. "WATER-BABIES." Design for a Band of Ornament. Reproduced in Colours from a Drawing by WINIFRED M. HORTON	99
8. A SIMPLE SCHEME OF DECORATION FOR A BOUDOIR, showing <i>in situ</i> the Decoration of Water-Babies illustrated on page 99. Reproduced in Colours from a Drawing by WINIFRED M. HORTON	101
9. STENCILLED FRIEZE FOR A NIGHT NURSERY. Reproduced in Colours from a Design by FLORENCE. H. LAVEROCK	101
10. "THE TEAK HOUSE." View of the Living-Room. Reproduced in Colours from a Design by A. WICKHAM JARVIS	107
11. DECORATIVE PANEL FOR A FIREPLACE IN GREEN SHELL AND MOTHER-OF-PEARL. By FREDERICK MARRIOTT	121
12. "WHEN PAN AND ALL THE WORLD WERE YOUNG." Two three-light Windows representing "Night" and "Day." Reproduced in Colours from the Designs by OSCAR PATERSON	141
13. A SCHEME FOR THE DECORATION OF A DINING-ROOM. Reproduced in Colours from a Drawing by OLIVIA RAWLINS	153
14. "THE CHAPLAIN'S HOUSE, ST. MARY'S HOME, WANTAGE." Reproduced in Colours from the Design by M. H. BAILLIE SCOTT	157
15. THE DINING-ROOM IN A HOUSE AT CROWBOROUGH. Reproduced in Colours from the Design by M. H. BAILLIE SCOTT	161
16. DESIGN FOR A STENCIL DECORATION. Reproduced in Colours from a Drawing by INGRAM TAYLOR	173
17. COLOUR-SCHEME OF THE DINING-ROOM IN C. F. A. VOYSEY'S HOUSE, "THE ORCHARD," AT CHORLEY WOOD. From a Sketch by WILFRID BALL	187
18. "EROS." A DESIGN FOR A SECTIONAL MOSAIC IN MARBLE, GLASS, AND SILVER. Reproduced in Colours from the Cartoon by GEORGE WALTON	201
19. INTERIOR OF THE DRAWING-ROOM IN A HOUSE AT HUDDERSFIELD. Reproduced in Colours from a Design by EDGAR WOOD	207



# LIST OF ARCHITECTS AND DESIGNERS

ANGUS, CHRISTINE, Designer	page 98
BALL, WILFRID, Painter	" 187
BEDFORD, F. W., and KITSON, S. D., Architects	" 35 to 38
BRANGWYN, FRANK, Painter and Designer	" 39 to 53
BREWER, CECIL C., Architect	" 54
BRIERLEY, W. H., Architect	" 55
BRIGGS, R. A., Architect and Designer	" 56 to 61
BURNE-JONES, SIR PHILIP, Painter and Designer	" 176
BUTLER, E., Architect	" 77 to 88
CASH, JOHN, Architect	" 62
CAVE, WALTER F., Architect and Designer	" 63 to 65
COOKE, JOHN, Painter	" 73
COOKSEY, MAY L. G., Designer	" 76
COOPER, C. J. HAROLD, Architect and Designer	" 66 to 75
CRESWICK, BENJAMIN, Sculptor	" 87
CROUCH, J., and BUTLER, E., Architects	" 77 to 88
DAVIS, FRED., R.I., Painter	pages 80, 84, 85
DAWSON, NELSON, Painter and Metal-worker	page 89
ELLWOOD, G. M., Designer	" 90 to 93
ELLWOOD, MRS. G. M., Embroiderer	" 93
FELL, H. GRANVILLE, Designer	" 95
FISHER, ALEXANDER, Metal-worker and Enameller	" 94
FRITH, W. S., Sculptor	pages 68, 69, 74
GRIGGS, F. L. B., Pen-draughtsman and Painter	page 139
HARRIS, FLORENCE D., Embroiderer	" 97
HASLAM, R., Architect	pages 106 and 109
HAYES, M., Woodcarver	page 38
HEAL, AMBROSE, Junior, Designer	" 98
HEATON, RALPH, Architect	" 103
HORTON, WINIFRED M., Designer	" 99 to 102
IMAGE, SELWYN, Designer and Painter	" 104 to 105
JARVIS, A. WICKHAM, and HASLAM, R., Architects	" 106 to 109
LEE, T. STIRLING, Sculptor	pages 67, 68, 74
MACKINTOSH, CHARLES R., Designer	page 110 to 115
MACKINTOSH, MARGARET MACDONALD, Designer	" 110 to 115



*List of Architects and Designers*

McNAIR, HERBERT, Designer	page	116 to 119
McNAIR, FRANCES, Designer	"	116 to 119
MARRIOTT, PICKFORD, Mosaic-worker in Pearl and Ivory	"	120
MARRIOTT, FREDERICK, Mosaic-worker in Pearl and Ivory	"	121
MITCHELL, ARNOLD, Architect	"	123 to 127
NEATBY, WILLIAM JAMES, Designer	"	128 to 131
NEWBERRY, MRS., J. R. Designer and Embroiderer	"	132 to 133
NEWILL, MARY J., Designer and Embroiderer	"	80 to 83
NEWTON, ERNEST, Architect	"	134 to 138
NIVEN, D. B., and WIGGLESWORTH, HERBERT, Architects	"	139
NOBLE, EDWIN, Designer	"	140
PATERSON, OSCAR, Worker in Stained Glass	"	141 to 146
PEARSE, S., Designer	"	147 to 148
PICKETT, EDITH, Designer	"	149
POMEROY, F. W., Sculptor	"	68
PRIOR, EDWARD S., Architect and Designer	"	150
RATHBONE, R. LL. B., Metal-worker	pages	37, 151, 152
RAWLINS, OLIVIA B., Designer	page	153
REYNOLDS, W. BAINBRIDGE, Metal-worker	"	155 to 156
RICHMOND, SIR WILLIAM, R.A., Painter and Designer	"	176
SCOTT, M. H. BAILLIE, Architect and Designer	"	157 to 163
SETH-SMITH, W. H., Architect	"	164 to 166
SIMPSON, EDGAR, Metal-worker	pages	36, 37, and 167
SMITHIES, JAMES, Metal-worker	page	168 to 169
SOLON, LEON V., Designer	"	170
SPOONER, CHARLES, Designer	"	171 to 172
STABLER, HAROLD, Metal-worker	"	151
SUMNER, HEYWOOD, Designer	"	177
TAYLOR, INGRAM, Designer	"	173 to 175
TAYLOR, UNA, Embroiderer	"	176 to 177
TREE, PHILIP, Architect and Designer	"	172
VEAZEY, DAVID, Designer	"	178 to 180
VOYSEY, C. F. A., Architect and Designer	"	181 to 194
WALKER, A. G., Sculptor	"	70
WALTON, GEORGE, Architect and Designer	"	195 to 206
WOOD, EDGAR, Architect and Designer	"	207 to 212



# The Studio' Special Summer Number

## Supplements

- Arthur H. Baxter. A Scheme of Simple Decoration for a Dining-Room. *Reproduction in colours.*
- Frank Brangwyn. A Fireplace in Cedar Wood, with a Panel of Enamel. *Reproduction in colours.*
- R. A. Briggs. Garden Front of a House at Hambledon. *Reproduction in colours.*
- R. A. Briggs. A House at Crowborough, Sussex. *Reproduced from a pencil drawing.*
- Mary Newill. "The Garden of Adonis." A Panel of Embroidery. *Reproduced in colours.*
- H. Granville Fell. "A Sea Idyll." Design for a Panel of Stained Glass. *Reproduced in colours.*
- Winifred M. Horton. Scheme for a Boudoir. *Reproduction in colours.*
- Winifred M. Horton. Frieze of Water Babies. *Reproduction in colours.*
- Florence H. Laverock. Stencilled Frieze for a Night Nursery. *Reproduction in colours.*
- A. Wickham Jarvis. "The Teak House." View of the Living-Room. *Reproduction in colours.*
- Frederick Marriott. Decorative Panel for a Fireplace, in Green Shell and Mother-of-Pearl. *Reproduced in colours.*
- Oscar Paterson. "Night" and "Day." Two Three-Light Windows in Stained Glass. *Reproduced in colours.*
- Olivia Rawlins. Decorative Scheme for a Dining-Room. *Reproduction in colours.*
- M. H. Baillie Scott. Chaplain's House, St. Mary's Home, Wantage. *Reproduction in colours.*
- M. H. Baillie Scott. The Hall in a House at Crowborough, Sussex. *Reproduction in colours.*
- Ingram Taylor. Stencil Decoration. *Reproduced in colours.*
- C. F. A. Voysey. View of the Dining-Room at "The Orchard," Chorley Wood. *Reproduced from a water-colour sketch by Wilfrid Ball.*
- George Walton. "Eros." A Design for a Sectional Mosaic in Silver, Glass, and Marble. *Reproduced in colours.*
- Edgar Wood. Interior of a Drawing-Room. *Reproduction in colours.*

ALL THE WORLD OVER



THE WESTMINSTER WALL PAPERS,  
ESSEX & CO WALL PAPER PRINTERS,  
114 & 116, VICTORIA STREET, WESTMINSTER.

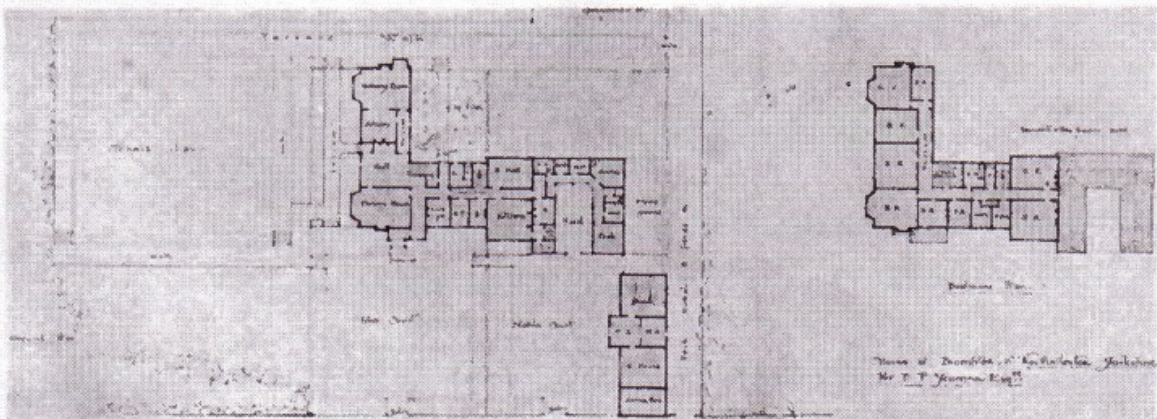
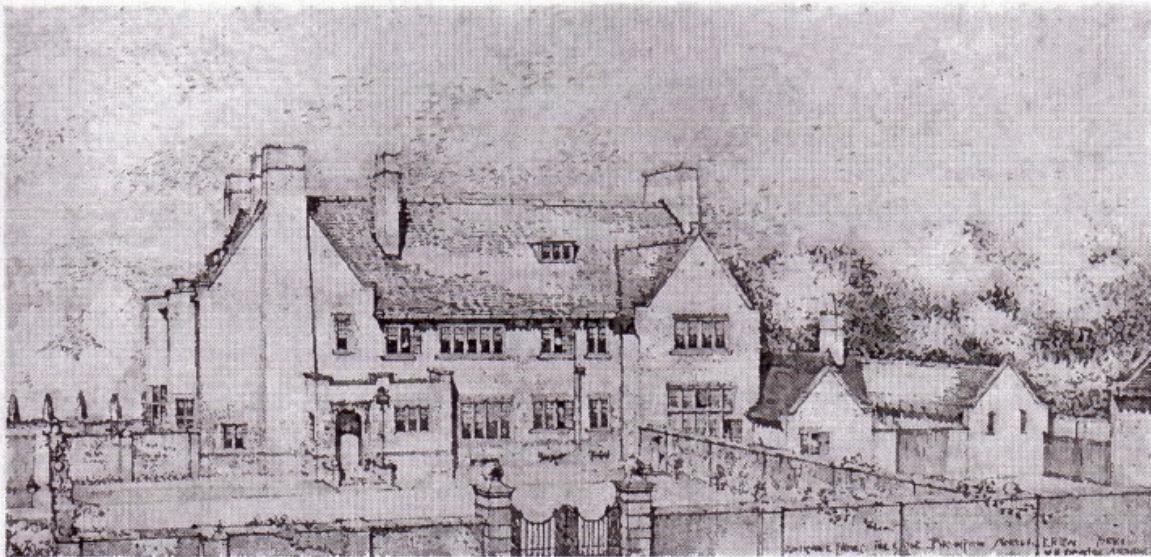
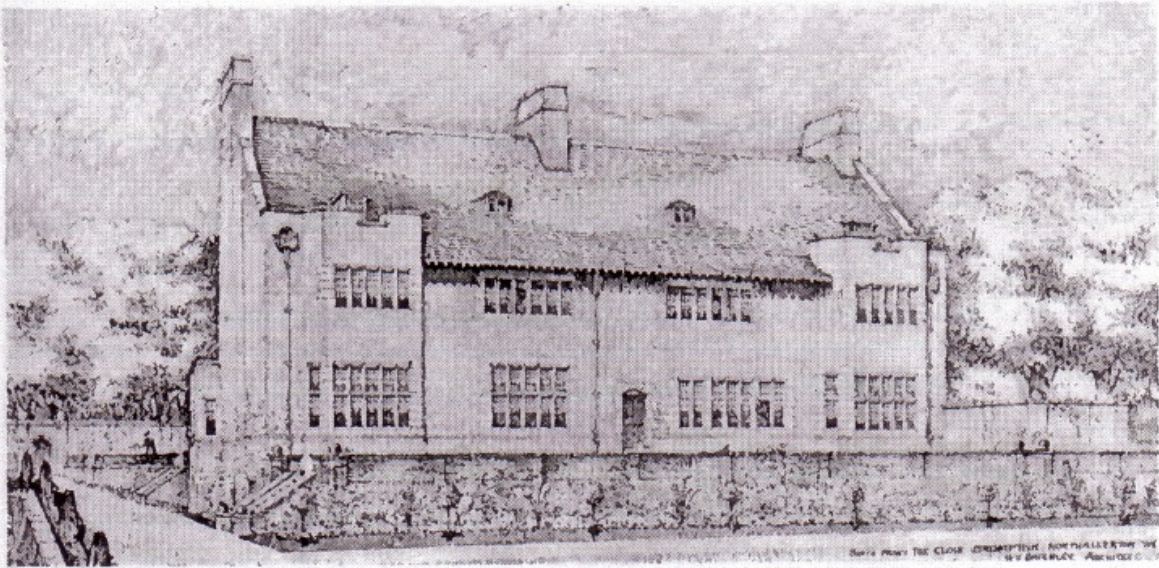




THE ENTRANCE COURT, BRAHAN, PERTH. THE WALLS ARE IN  
ROUGH-CAST OF A CREAMY-GREY COLOUR; THE PORCH IS OF  
OAK, WITH BEAMS AND POSTS CARVED FROM CARTOONS BY THE  
ARCHITECTS. THE ROOF IS COVERED WITH GREEN SLATES

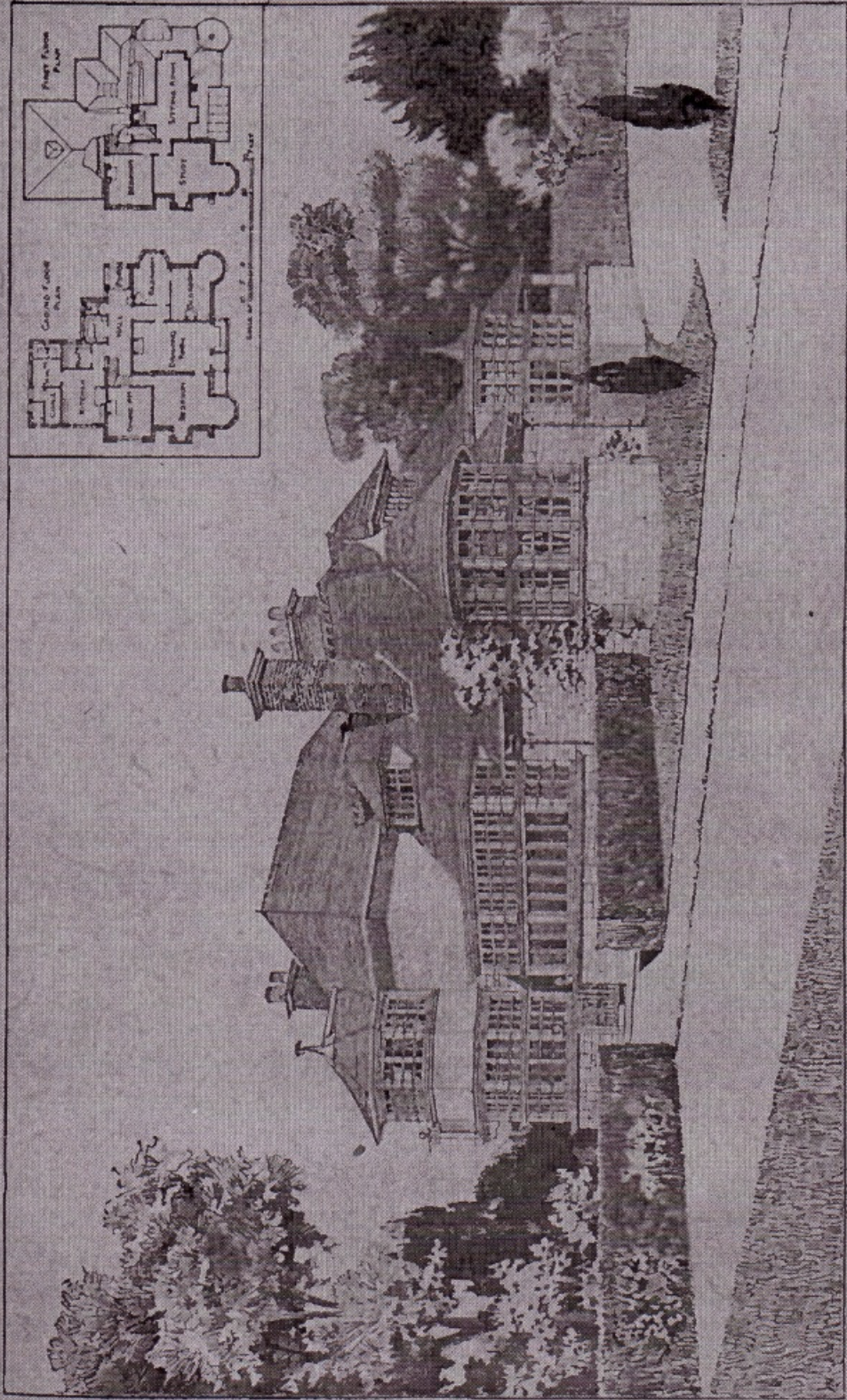


W. H. BRIERLEY  
ARCHITECT



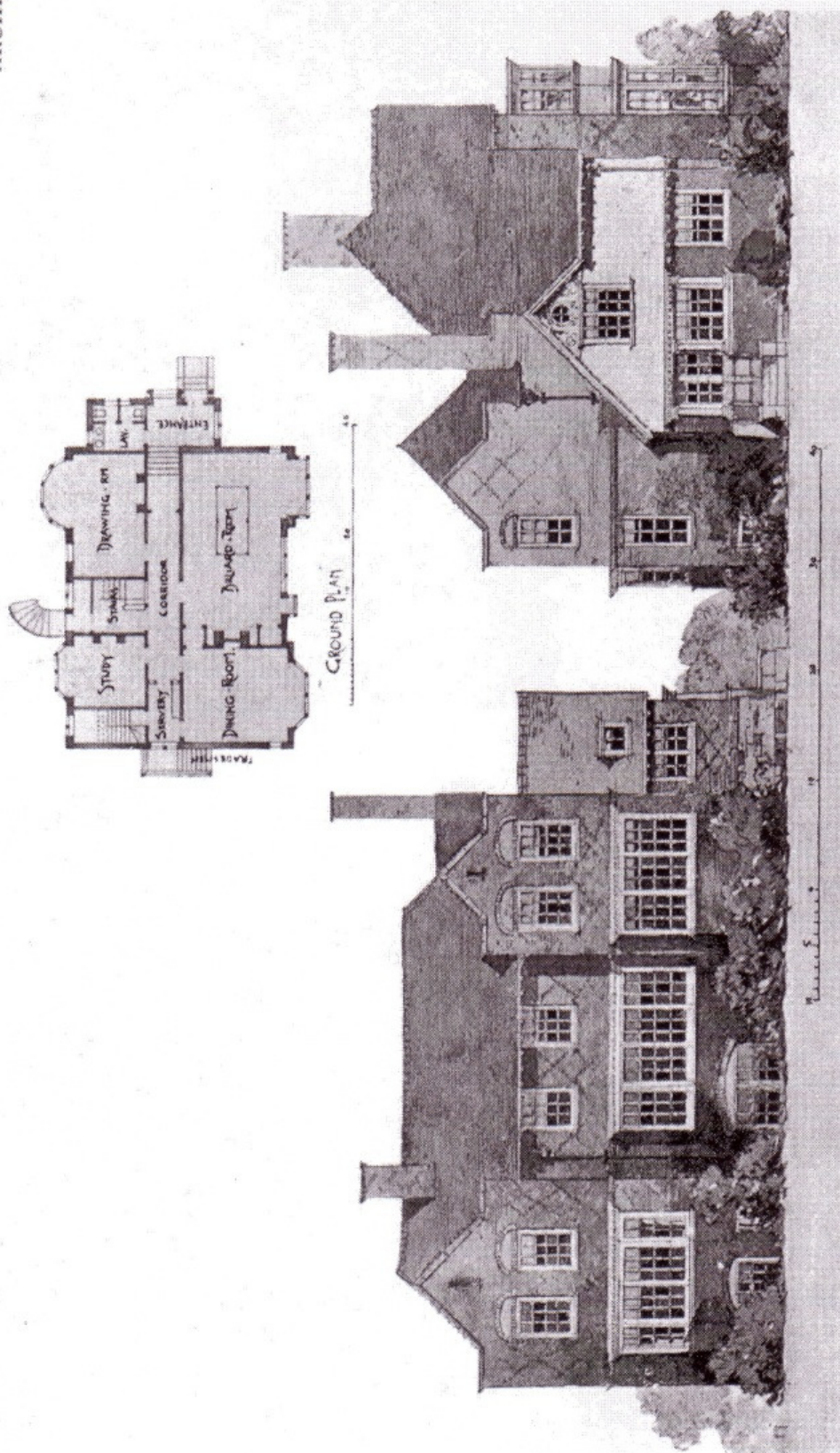
ELEVATIONS AND PLANS OF "THE  
CLOSE," NORTHALLERTON







JOHN CASH  
ARCHITECT



A HOUSE IN KENT FOR THE RT. HON. HERBERT J. GLADSTONE, M.P.  
THE WALLS ARE FACED OUTSIDE WITH DARK RED BRICKS RELIEVED  
BY WHITE-PAINTED WOODWORK AND GREY ROUGH-CAST



WALTER F. CAVE  
ARCHITECT



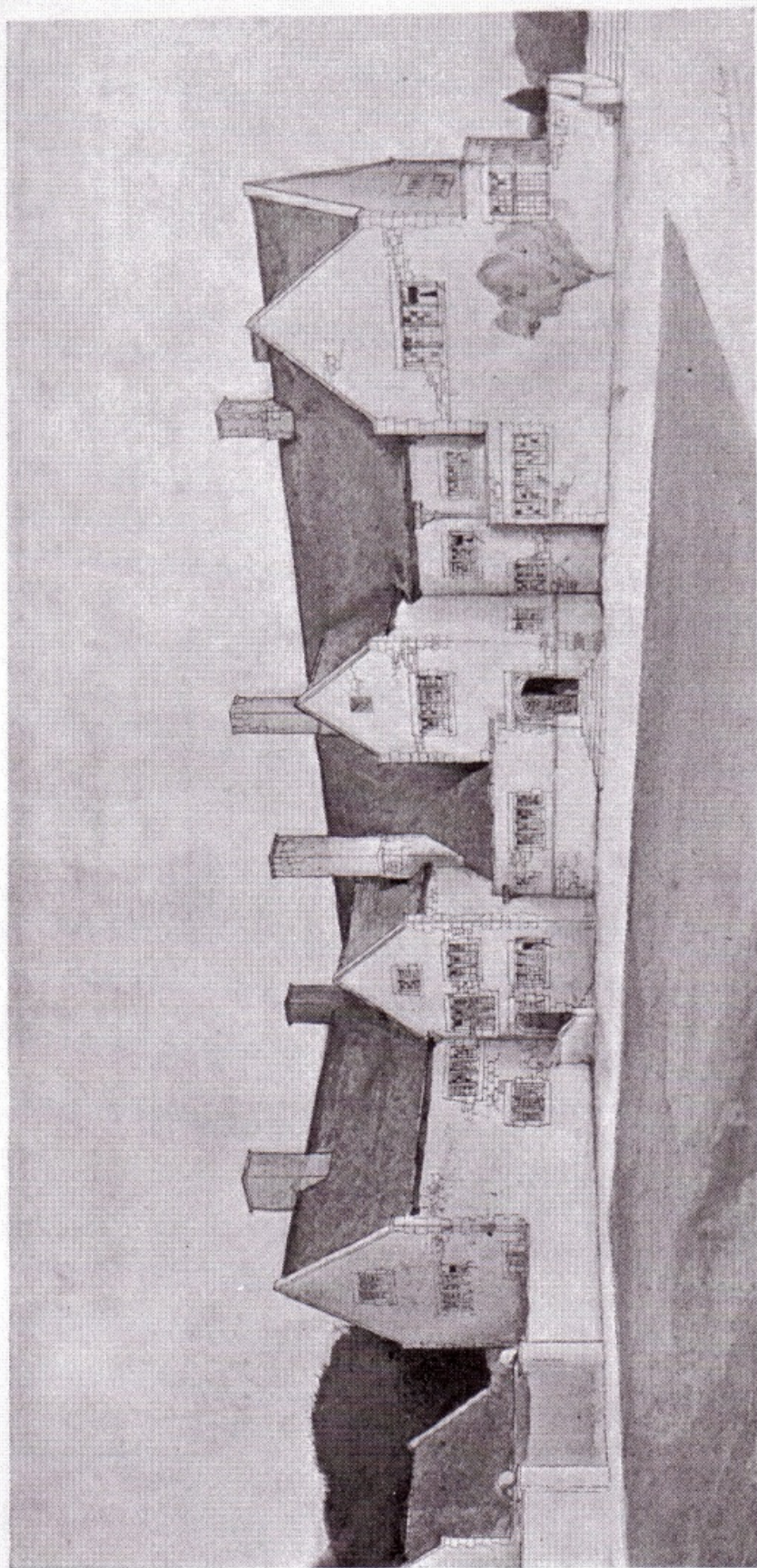
*(By permission of R. L. Essex, Esq.)*

NORTH AND SOUTH SIDES OF "DIXCOT," STREATHAM PARK. THIS HOUSE, BUILT OF HAM HILL STONE, HAS ROUGH-CAST WALLS AND A RED-TILED ROOF









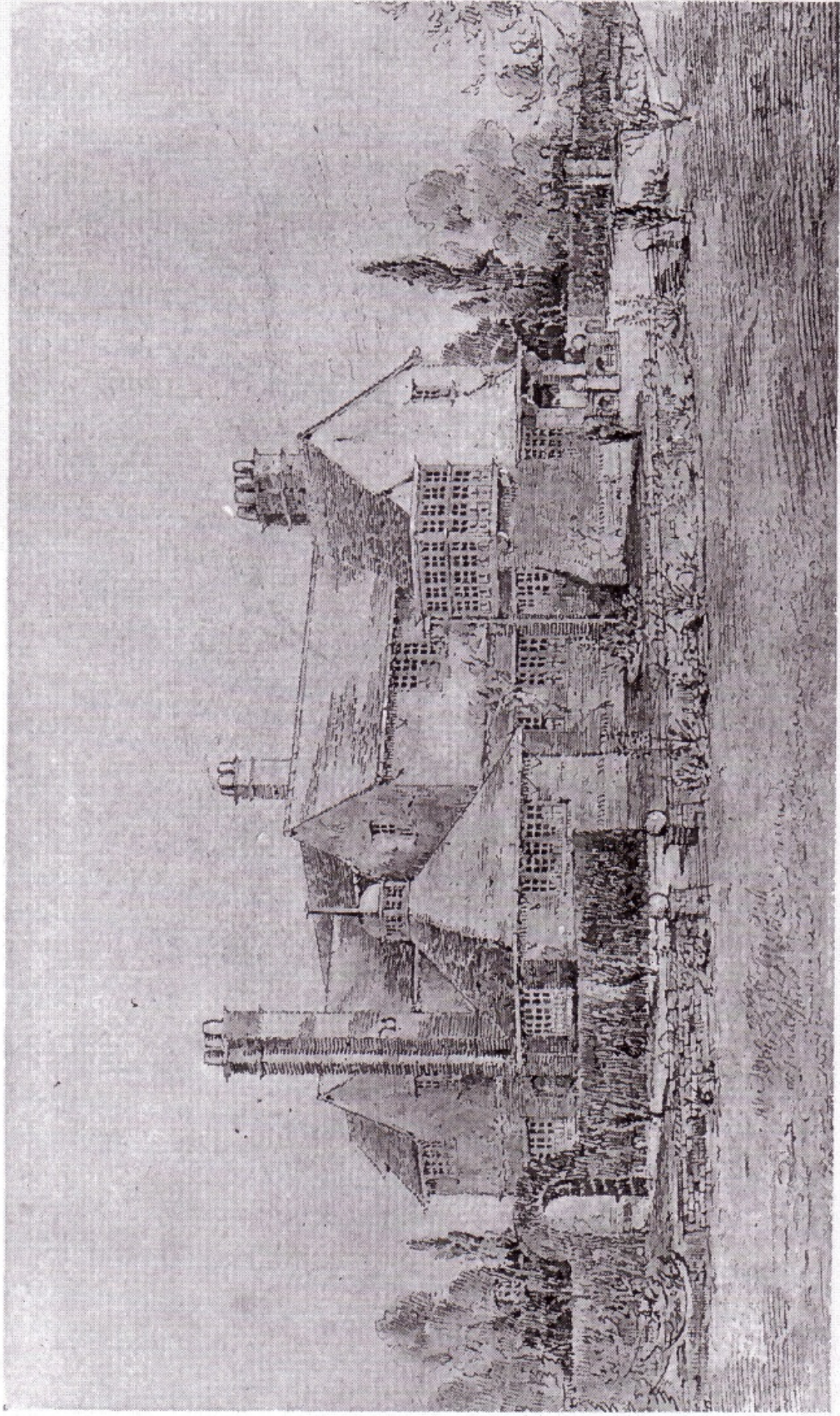
STONE HOUSE, WITH A GREEN SLATE ROOF,  
BUILT AT WINDERMERE FOR E. HOLT, ESQ.







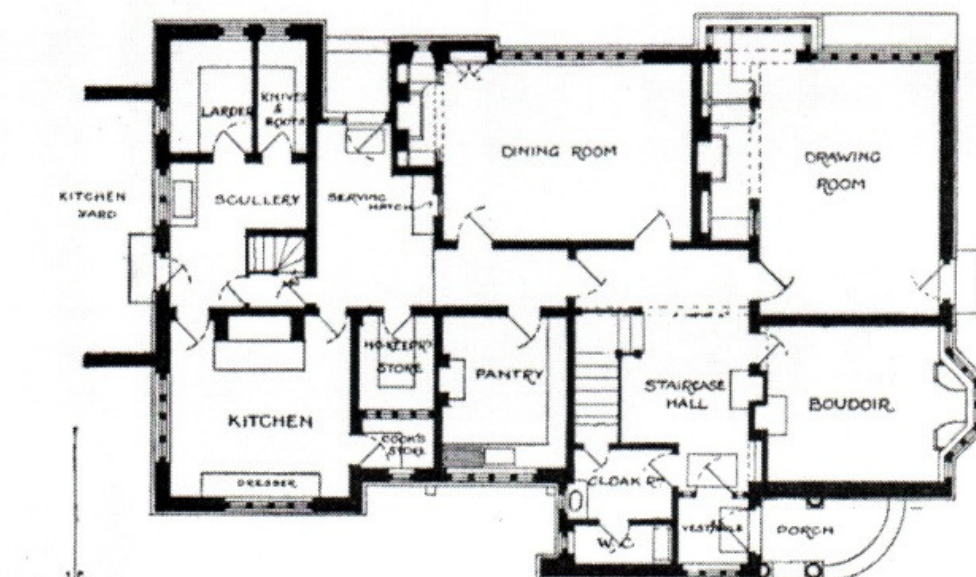
W. H. SETH-SMITH  
ARCHITECT



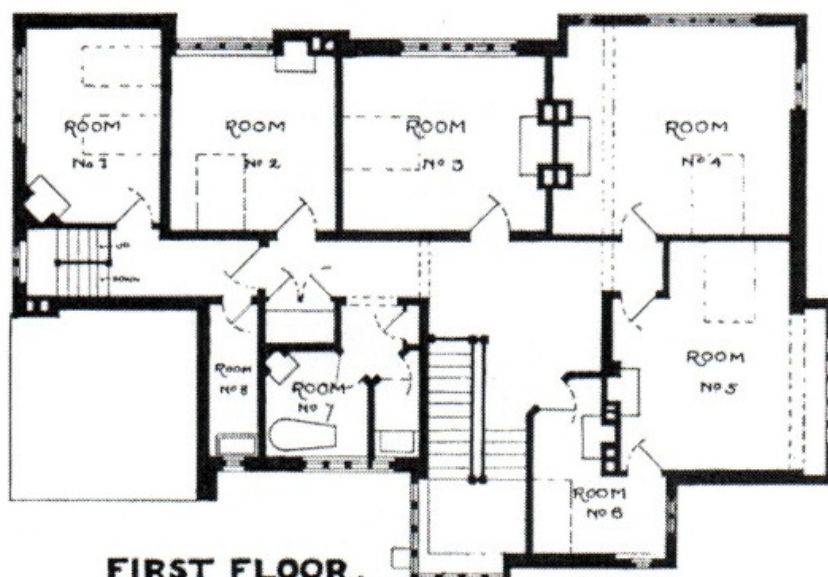
HOUSE AT EASTCOTE, PINNER, MIDDLESEX



# HOUSE AT EASTCOTE, PINNER, MIDDLESEX.



GROUND FLOOR.



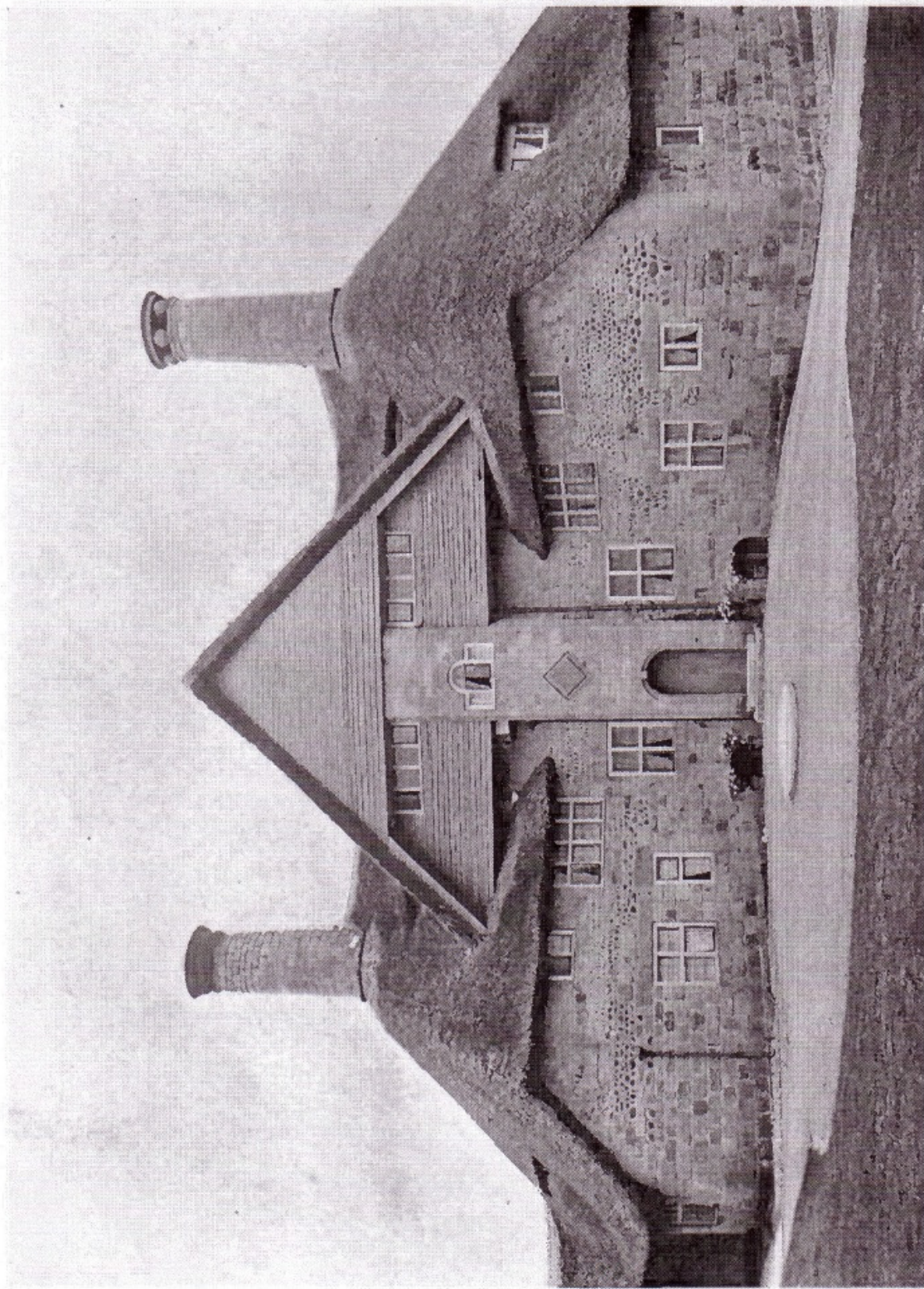
FIRST FLOOR.

Scale 1/4" = 1' 0"

W. H. SETH-SMITH : ARCHITECT.  
46 LINCOLN'S INN FIELDS.  
LONDON · W.C. · MARCH 1901.



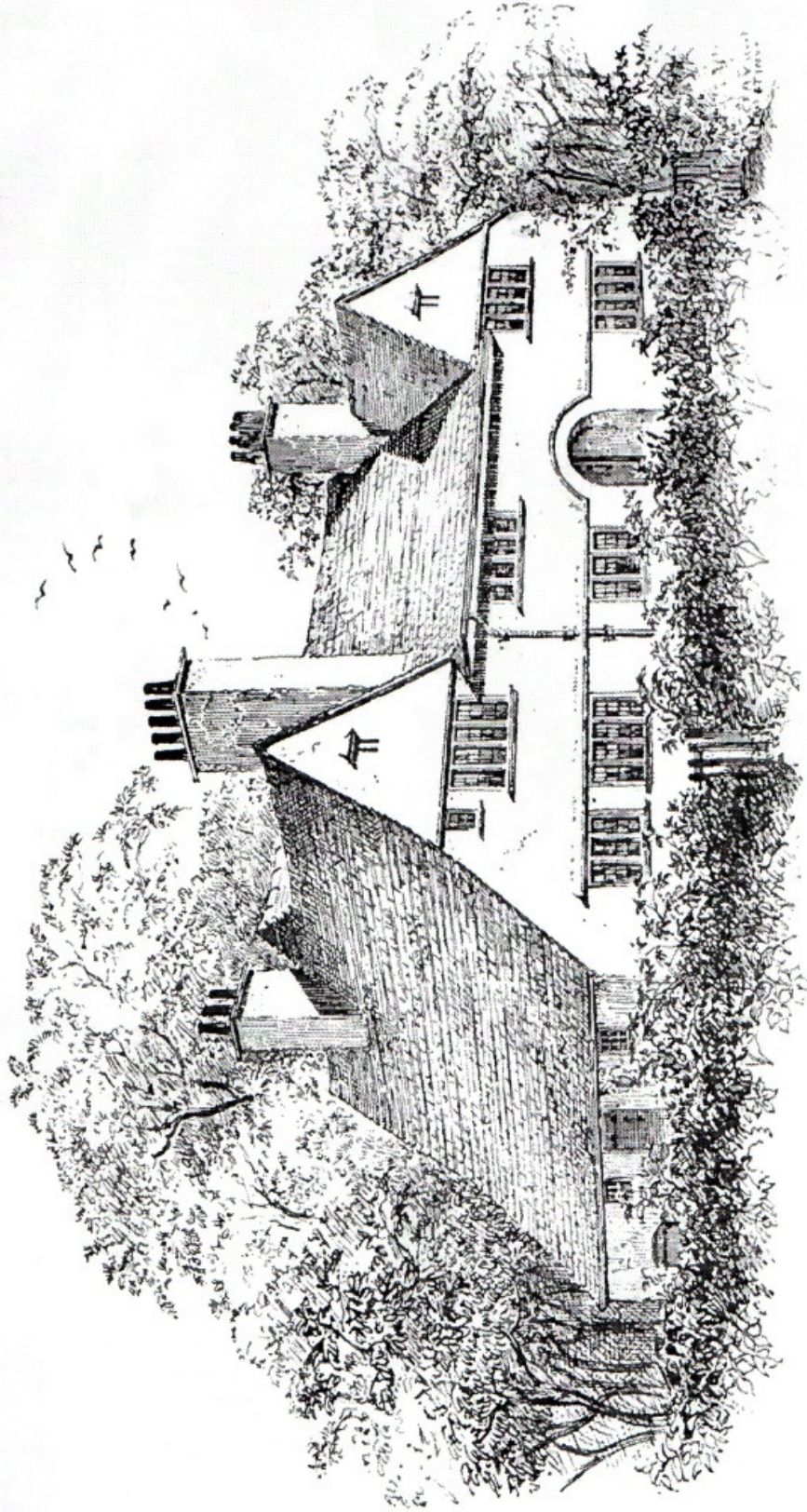
EDWARD S. PRIOR  
ARCHITECT



"THE BARN," EXMOUTH. THE ENTRANCE COURT. THE WALL FACING IS OF BEACH PEBBLES AND SAND-  
STONE; THE BOARDING TO THE GARLES IS OF ENGLISH OAK; THE ROOF IS THATCHED WITH SPEAR-GRASS



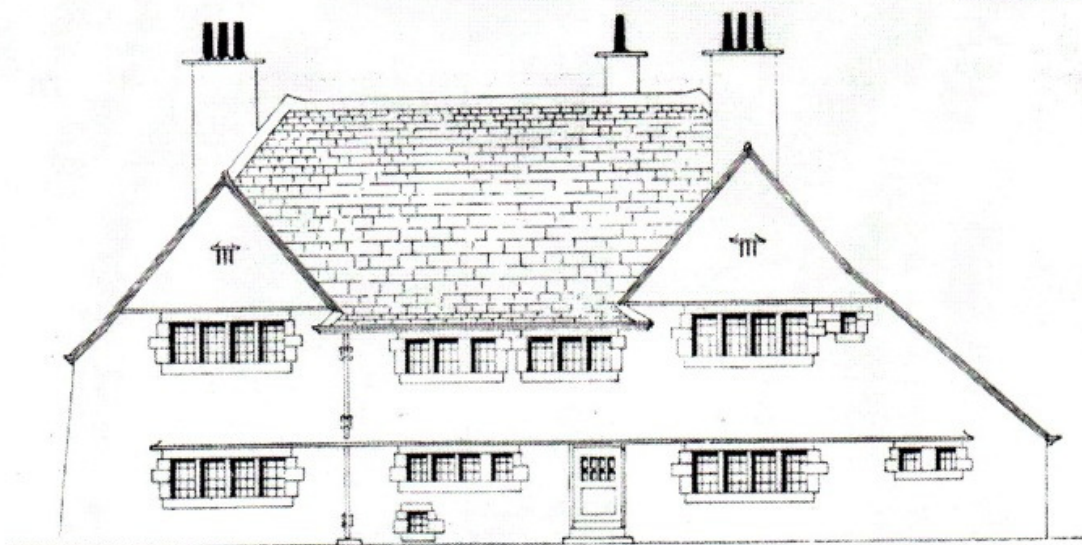
C. F. A. VOYSEY  
ARCHITECT



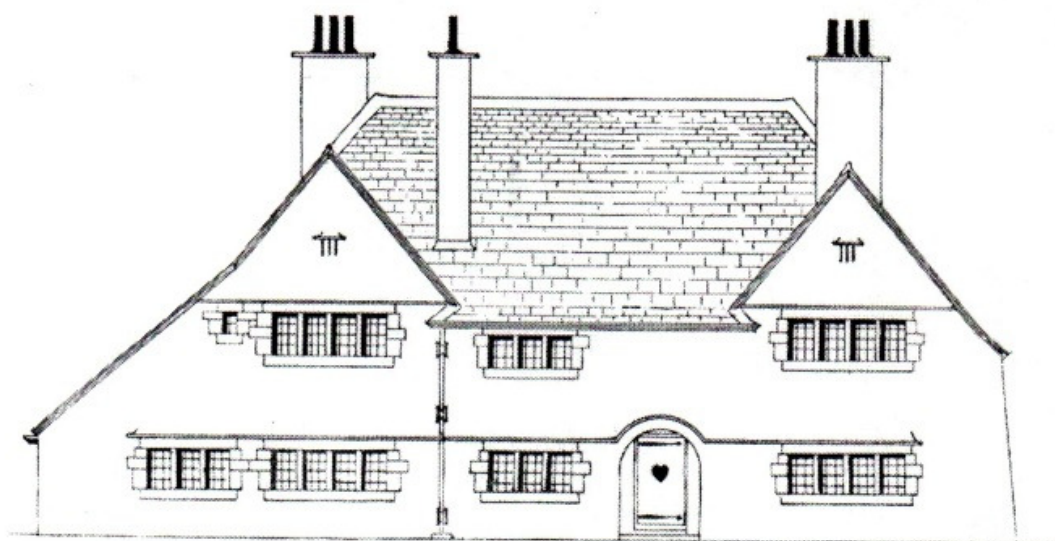
"THE ORCHARD," CHORLEY WOOD, HERTFORDSHIRE. MATERIALS: BRICK,  
ROUGH-CAST, GREEN SLATES FOR THE ROOF, IRON FOR THE CASEMENTS,  
AND MONK PARK STONE FOR THE WINDOW-DRESSINGS



C. F. A. VOYSEY  
ARCHITECT



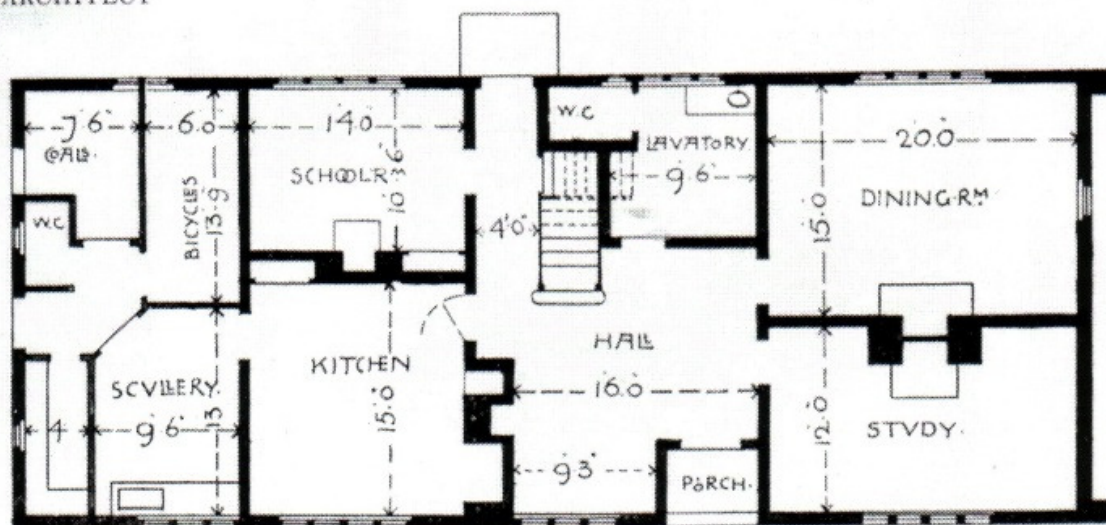
"THE ORCHARD." SOUTH ELEVATION, TOWARDS THE GARDEN



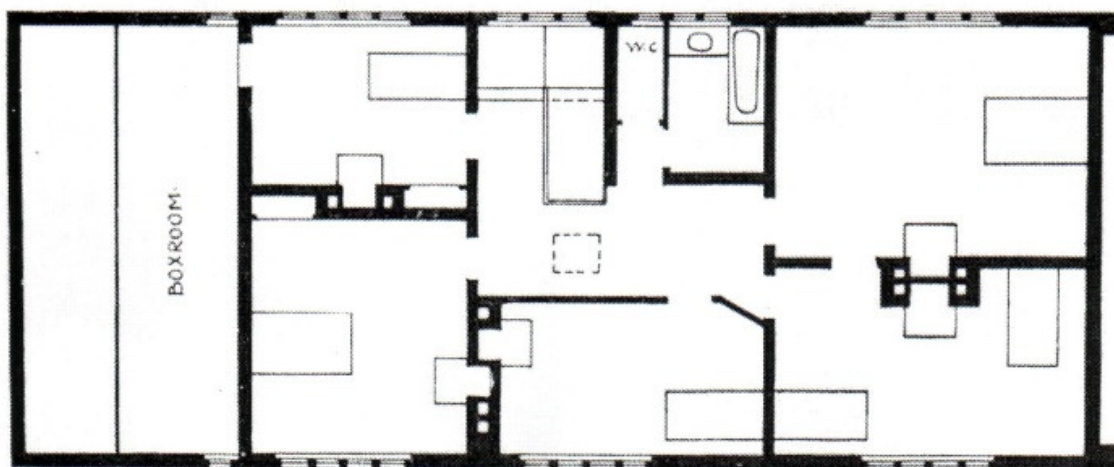
"THE ORCHARD." NORTH ELEVATION, TOWARDS CHORLEY WOOD  
182



C. F. A. VOYSEY  
ARCHITECT



"THE ORCHARD," CHORLEY WOOD. GROUND PLAN



"THE ORCHARD," CHORLEY WOOD. BEDROOM PLAN



C. F. A. VOYSEY  
ARCHITECT

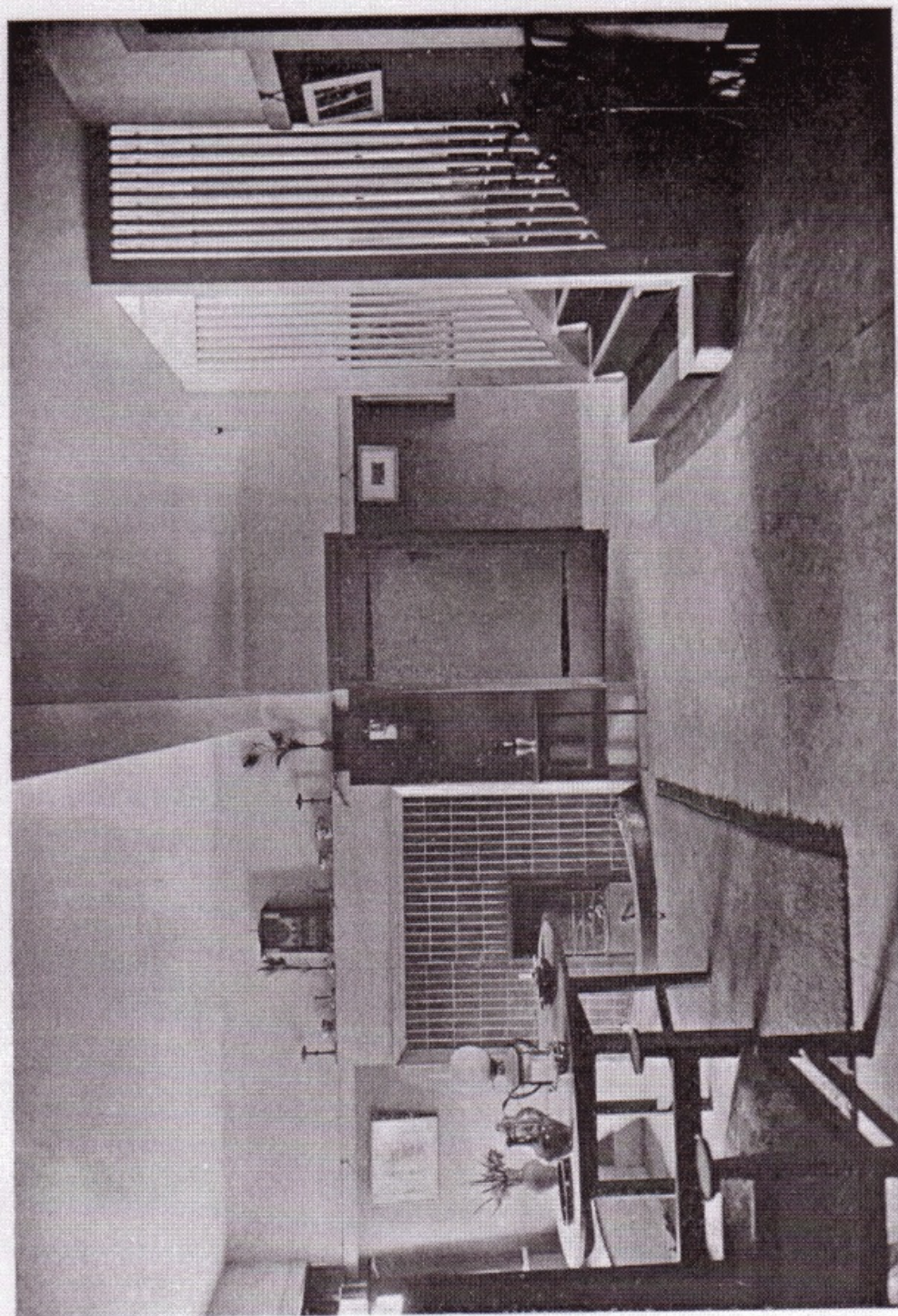


SOUTH ELEVATION OF "THE ORCHARD"



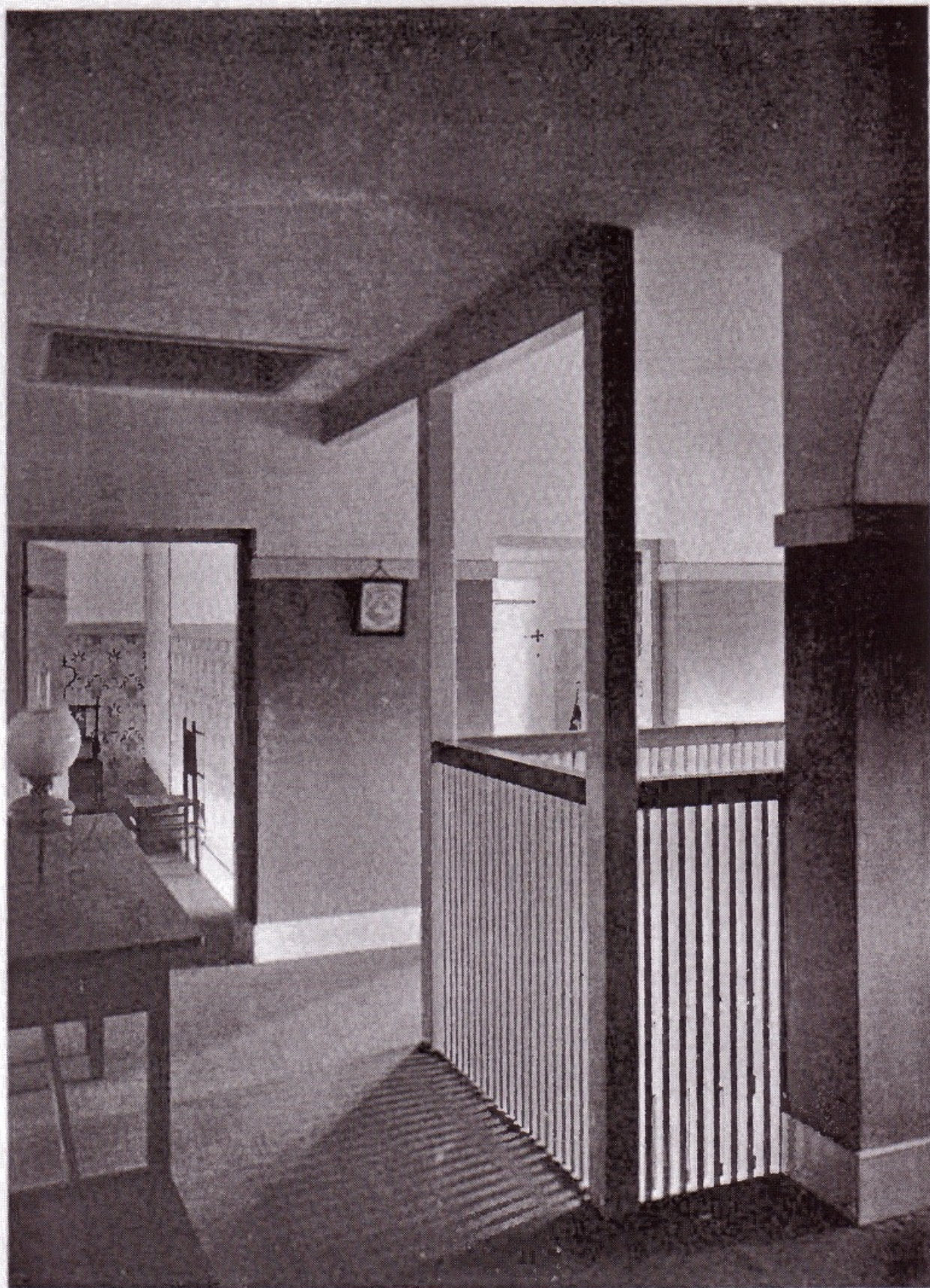
VIEW FROM THE STUDY WINDOW AT "THE ORCHARD"  
SHOWING THE ENTRANCE GATE AND CHORLEY WOOD  
184





HALL, "THE ORCHARD," CHORLEY WOOD, PAVED WITH DELABOLE GREEN-GRAY SLATES. THE FRIEZE, THE WOODWORK, AND THE CEILING ARE WHITE. BELOW THE PICTURE RAIL THE WALLS ARE COVERED WITH ELTONBURY SILK-FIBRE PAPER OF A PURPLE TONE; THE CARPET IS A DONEGAL TUFT IN DEAD PEACOCK BLUE; THE TWILL CURTAINS ARE TURKEY RED, AND THE DUTCH TILES TO THE FIREPLACE A DELICATE GREEN





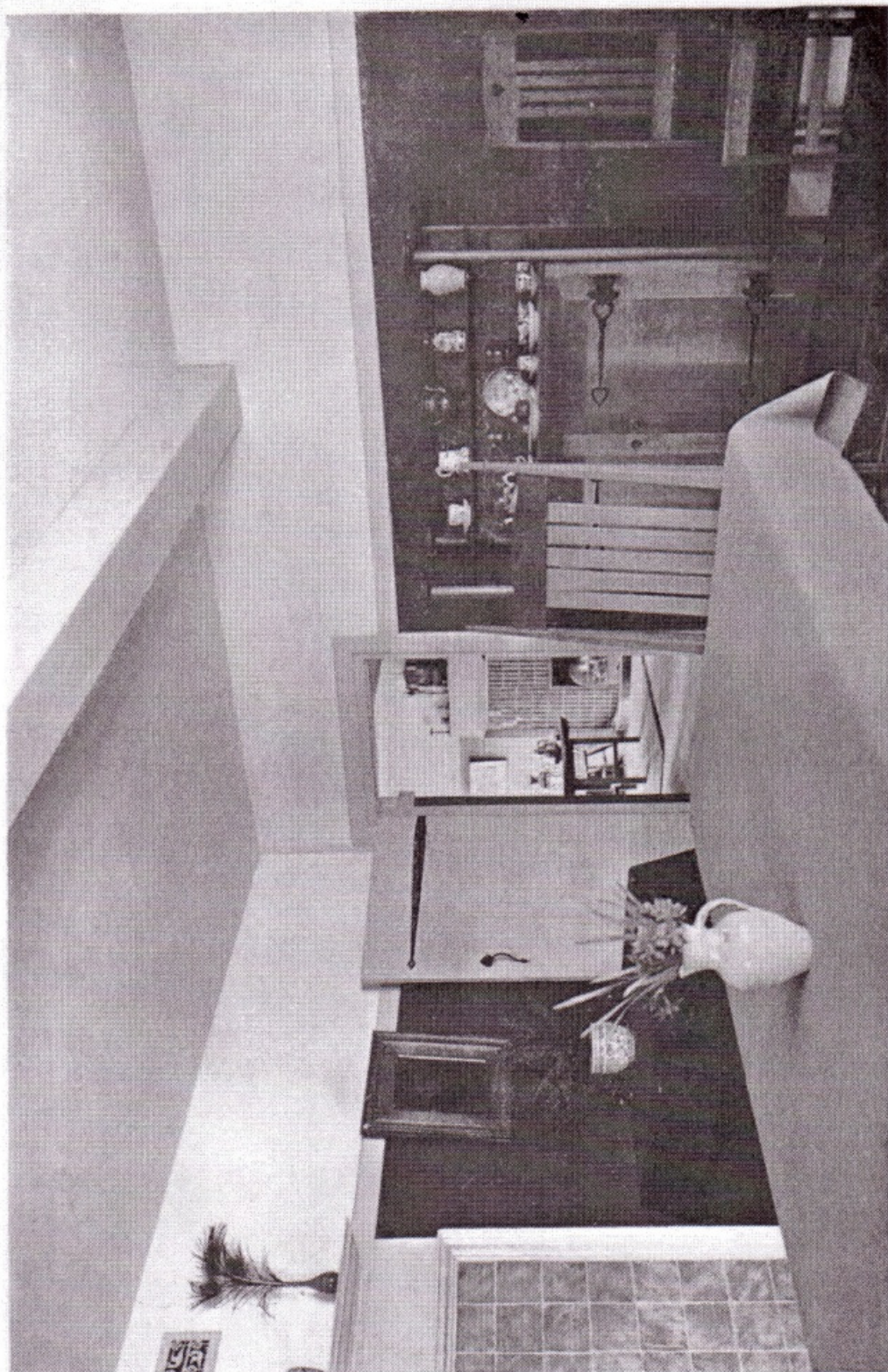
STAIRCASE, "THE ORCHARD," CHORLEY WOOD, WITH UNPOLISHED  
PLAIN OAK HANDRAIL. THE CARPET IS GREEN-GREY, WHILE THE REST  
OF THE COLOURING IS THE SAME AS THAT DESCRIBED ON PAGE 185  
186





The Orchard  
Chorley Wood

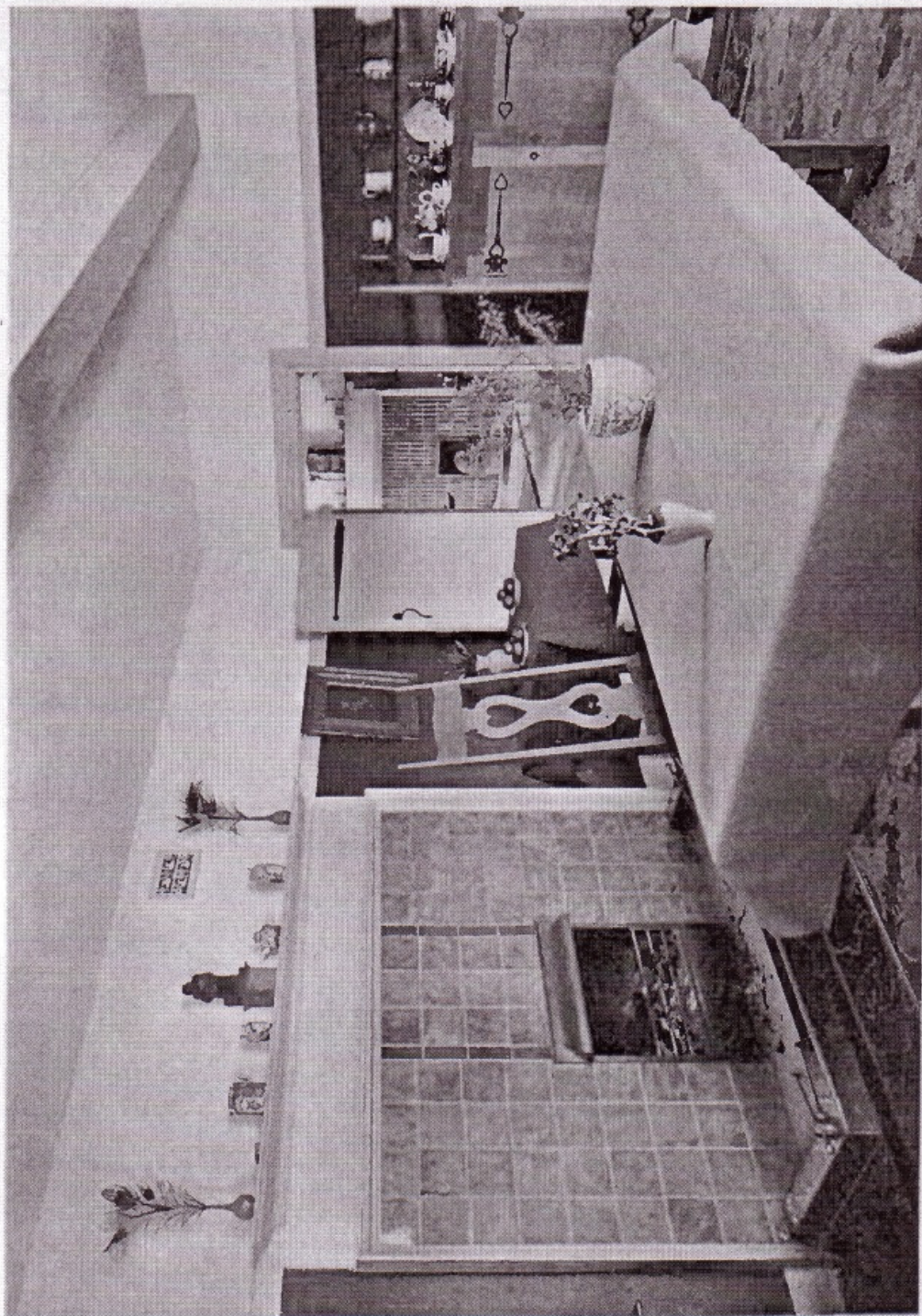




DINING-ROOM, "THE ORCHARD," CHORLEY WOOD. IT IS PAPERED TO THE PICTURE RAIL WITH PLAIN GREEN ELTONBURY; THE WOODWORK IS WHITE, LIKE THE CEILING AND FRIEZE; THE CARPET IS BLUE AND GREEN, WITH RED AND YELLOW FLOWERS, AND THE FIREPLACE TILES AND THE SERGE TABLE-CLOTH ARE GREEN-GRAY OF VARYING TONES. THE FURNITURE, DESIGNED BY THE ARCHITECT, IS OF PLAIN OAK, SIMPLY OILED



C. F. A. VOYSEY  
ARCHITECT AND DESIGNER



DINING-ROOM, "THE ORCHARD," CHOSLEY WOOD. FOR DESCRIPTION SEE PAGE 189  
190

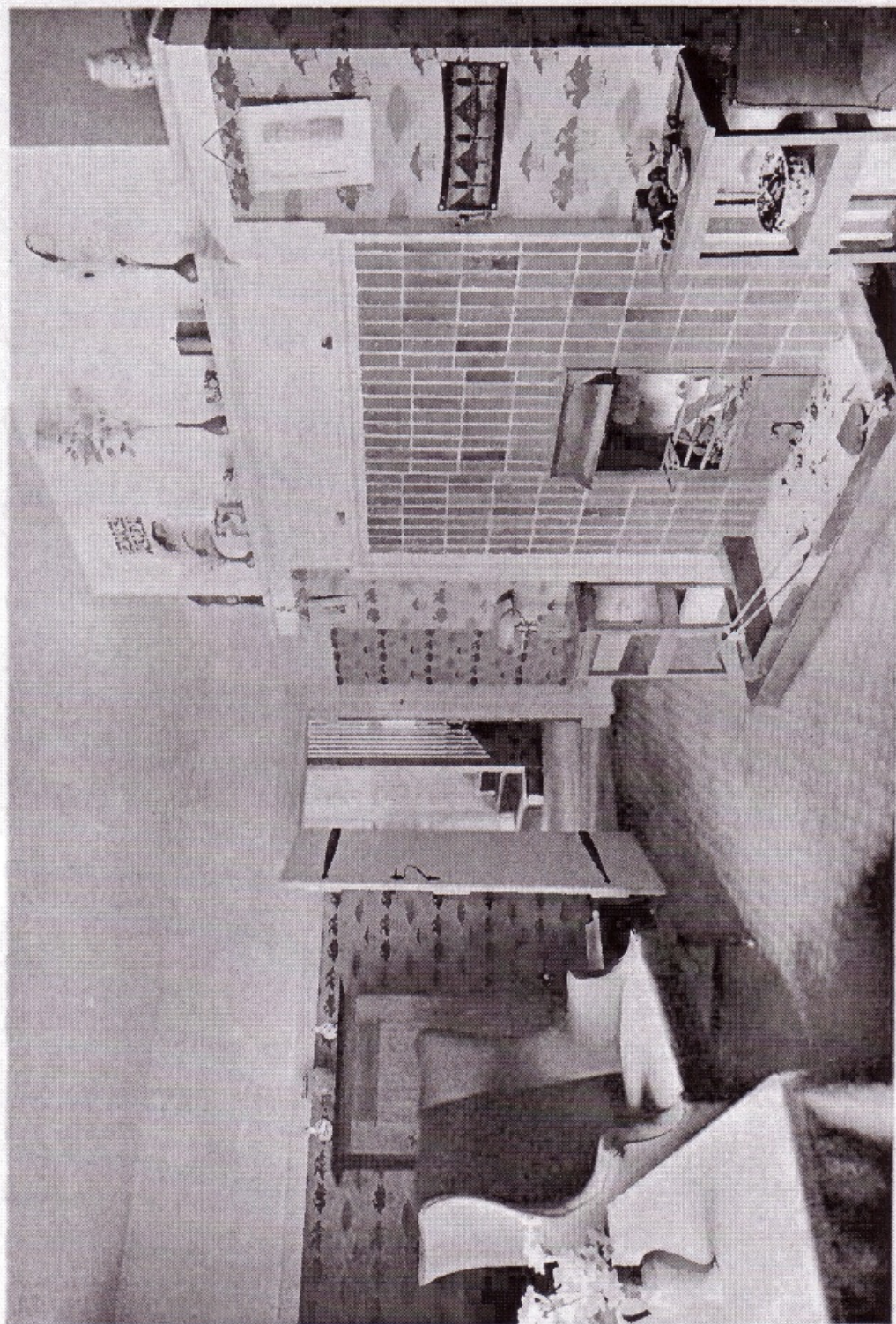




DINING-ROOM, "THE ORCHARD," CHORLEY WOOD. FOR PARTICULARS SEE PAGE 189  
191



C. F. A. VOYSEY  
ARCHITECT AND DESIGNER



STUDY, "THE ORCHARD," CHORLEY WOOD. DECORATED IN GREY-GREENS AND WHITE, WITH A TOUCH OF TURKEY RED IN THE TWILL WINDOW CURTAINS



C. F. A. VOYSEY  
ARCHITECT AND DESIGNER



BEDROOM, "THE ORCHARD," CHORLEY WOOD  
193

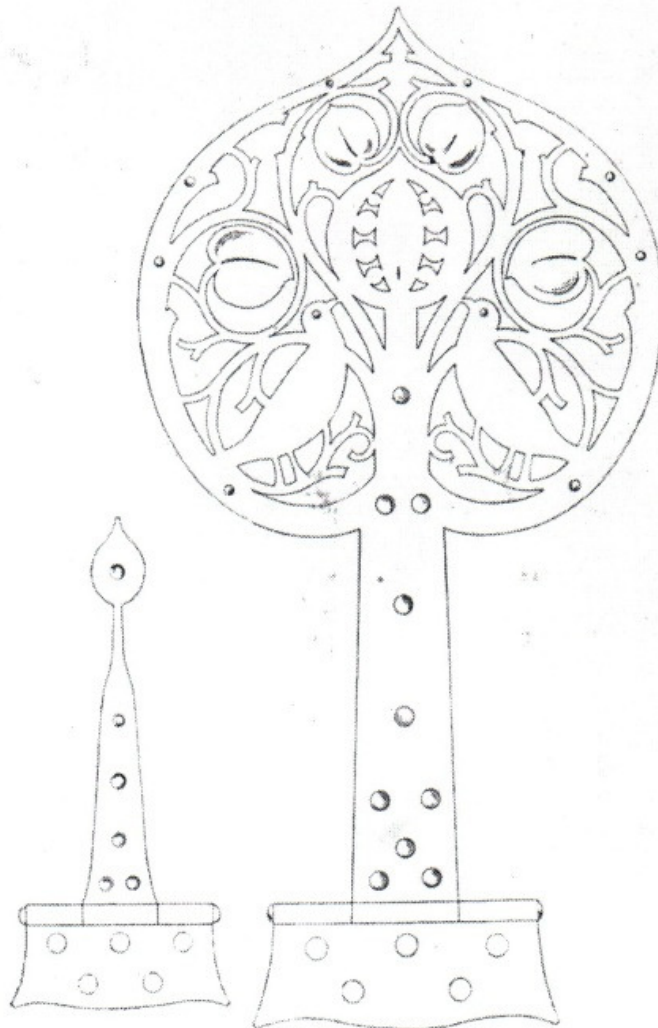


C. F. A. VOYSEY  
DESIGNER



DESIGN FOR A MUSIC REST FOR A GRAND PIANO

*(By permission of Messrs. Collard & Collard)*



CABINET HINGES IN WROUGHT BRASS